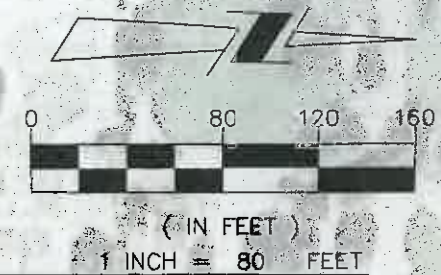
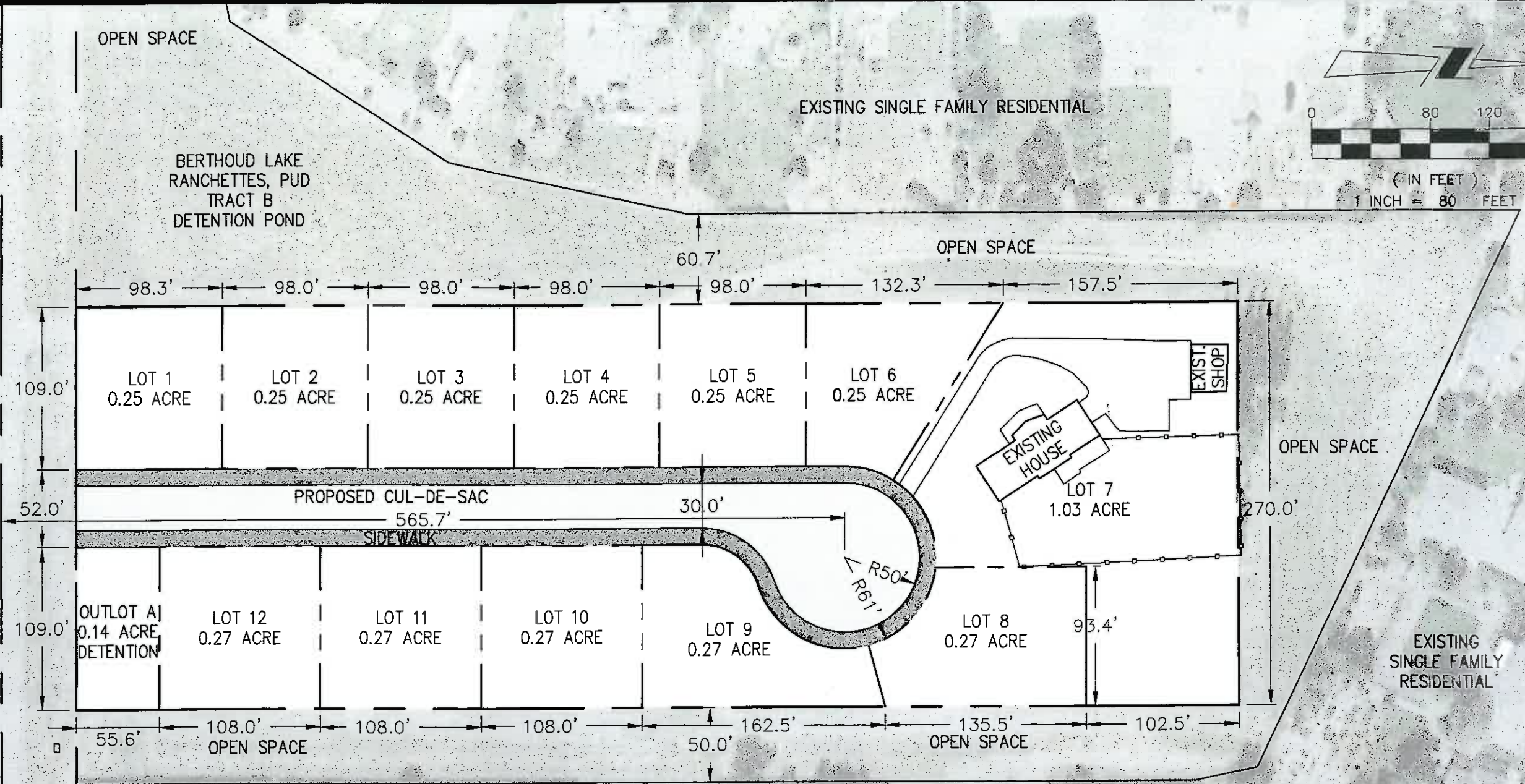
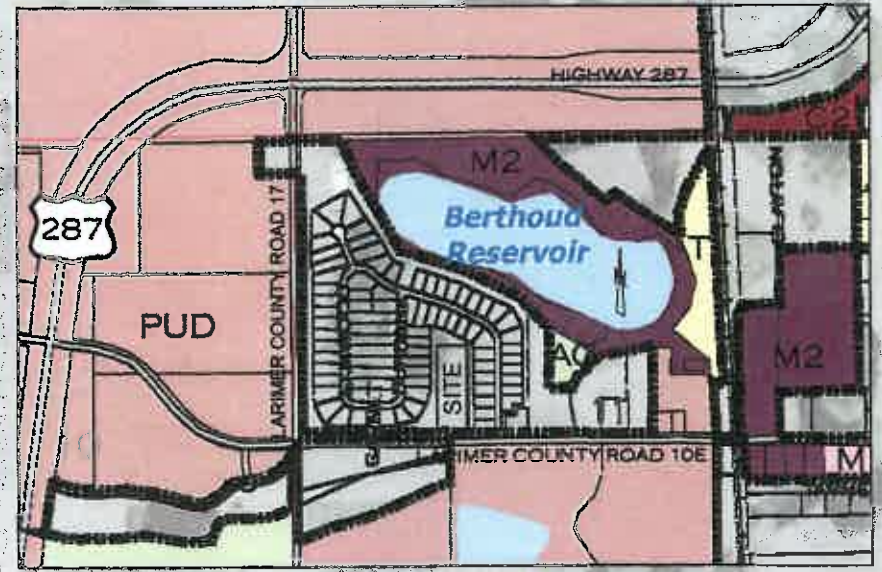


COUNTY ROAD 10E



**LAND USE TABLE**

USE: SINGLE FAMILY RESIDENTIAL
ZONING: R1
DENSITY: 2.5 UNITS/ACRE



VICINITY MAP  
NTS

NO. DESCRIPTION REVISIONS BY DATE

618 E. Larimer County Road 14  
Lafayette, CO 80037  
P: 970.613.1447  
WWW.TAIT.COM

**TAIT**  
Since 1961  
Civil Engineer  
Surveyor  
Professional Engineer  
Professional Planner

**CONCEPT PLAN**  
Berthoud Lake Enclave  
Owner/Developer: Alex Hoime of HOIME Development, LLC  
824 West County Road 10E, Berthoud, Colorado - (970) 290-1970

DRAWN: AEH  
DATE: 11/22/2014  
CHECKED: AEH  
DATE: 11/22/2014  
REVISION #:  
DATE:  
JOB NO: H010080