

# BERTHOUD AT A GLANCE

Monthly Report  
OCTOBER 2017

- Sales & Use Tax revenue is 53% **over** budget for the month of October; \$249,397 was received and \$162,784 was budgeted.
- Town Revenue for the month of October including transfers between funds is \$1,505,044, a **decrease** of \$105,872 from September.
- Town Expenditures for the month of October are \$1,402,614, a **decrease** of \$980,791 from September. This is due in part to annual bond payments.
- Town Revenue is 76% **over** budget thru July.
- Town Expenditures are 24% **under** budget thru July.

## Sales Tax Review

| OCTOBER     | Berthoud<br>Sales Tax | Motor<br>Vehicle Use<br>Tax | Building<br>Materials Use<br>Tax | Combined<br>Total |
|-------------|-----------------------|-----------------------------|----------------------------------|-------------------|
| <b>2017</b> | 112,729.48            | 57,630.28                   | 79,037.30                        | 249,397.06        |
| <b>2016</b> | 121,242.78            | 39,187.30                   | 42,252.70                        | 202,682.78        |
| <b>2015</b> | 109,521.36            | 28,752.97                   | 23,878.50                        | 162,152.83        |
| <b>2014</b> | 133,195.92            | 38,711.72                   | 38,056.38                        | 209,964.02        |

**SALES TAX YEAR-TO-DATE FOR 2017**

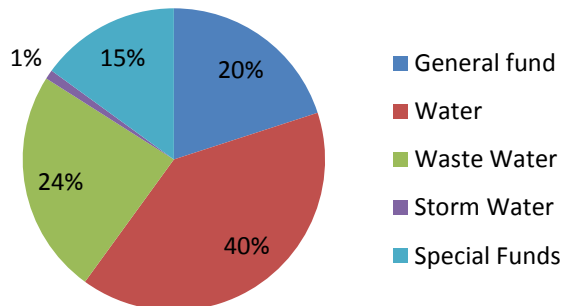
**\$3,054,636.04**

COMBINED STATEMENT OF REVENUES AND EXPENDITURES  
OCTOBER 2017

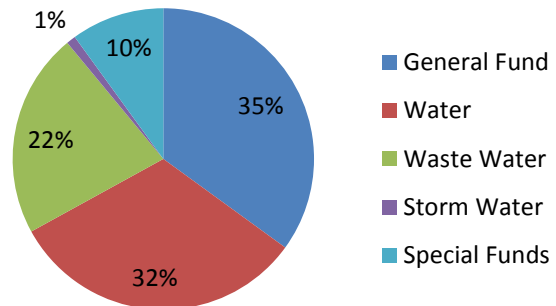
| REVENUE              | Current Month    | YTD Actual        | YTD Budget        | % of Budget |
|----------------------|------------------|-------------------|-------------------|-------------|
| General Fund         | 360,840          | 5,008,517         | 4,269,140         | 117%        |
| Water                | 472,533          | 10,224,554        | 3,468,700         | 295%        |
| Waste Water          | 376,934          | 6,000,152         | 3,832,120         | 157%        |
| Storm Water          | 21,601           | 195,759           | 180,840           | 108%        |
| Special Funds        | 273,136          | 3,907,970         | 2,623,560         | 149%        |
| <b>TOTAL REVENUE</b> | <b>1,505,044</b> | <b>25,336,952</b> | <b>14,374,360</b> | <b>176%</b> |
| Prior Year Revenue   | 2,588,226        | 17,989,179        | 12,556,133        |             |

| EXPENDITURES              | Current Month    | YTD Actual        | YTD Budget        | % of Budget |
|---------------------------|------------------|-------------------|-------------------|-------------|
| General Fund              | 316,335          | 4,242,085         | 5,427,700         | 78%         |
| Water                     | 345,109          | 3,806,746         | 3,711,370         | 103%        |
| Waste Water               | 470,553          | 2,630,534         | 3,523,530         | 75%         |
| Storm Water               | 17,002           | 201,558           | 275,320           | 73%         |
| Special Funds             | 253,615          | 1,187,994         | 2,945,260         | 40%         |
| <b>TOTAL EXPENDITURES</b> | <b>1,402,614</b> | <b>12,068,917</b> | <b>15,883,180</b> | <b>76%</b>  |
| Prior Year Expenses       | 2,696,706        | 15,805,516        | 16,078,321        |             |

**Revenue**



**Expenditures**



2017

|                       | YEAR TO DATE TOTALS<br>THRU OCTOBER 2017 |
|-----------------------|--|
| Single Family Permits | 364                                      |
| Overall Permit Total  | 1150                                     |
| Water Gallons Billed  | 268,249,000                              |
| Passports             | 1902                                     |
| Cemetery              | 26 Funerals                              |
| Snow removal          | 138 hours                                |

### Building Permit & Permit Valuation by Year & 2017 YTD

|   | 2013         | 2014         | 2015         | 2016         | 2017 YTD     |
|---|--------------|--------------|--------------|--------------|--------------|
| Single-Family home permits                    | 152          | 66           | 113          | 133          | 364          |
| All permits (roofing, decks, additions, etc.) | 533          | 2197         | 638          | 732          | 1150         |
| Total Permit Value                            | \$35,550,777 | \$17,873,000 | \$32,187,613 | \$44,282,530 | \$96,158,260 |

### **Business Development October 2017 Highlights**

- ✚ Responded to 8 inquiries (50 for the year)
- ✚ Presented at CML Regional meeting
- ✚ Met with Wells Fargo executives to discuss Berthoud development
- ✚ Met with Western States Bank to discuss Berthoud development
- ✚ Met with business interested in annexing into Berthoud
- ✚ Met with Weld County Commissioners to discuss grant request
- ✚ Attended 2 local or regional meetings

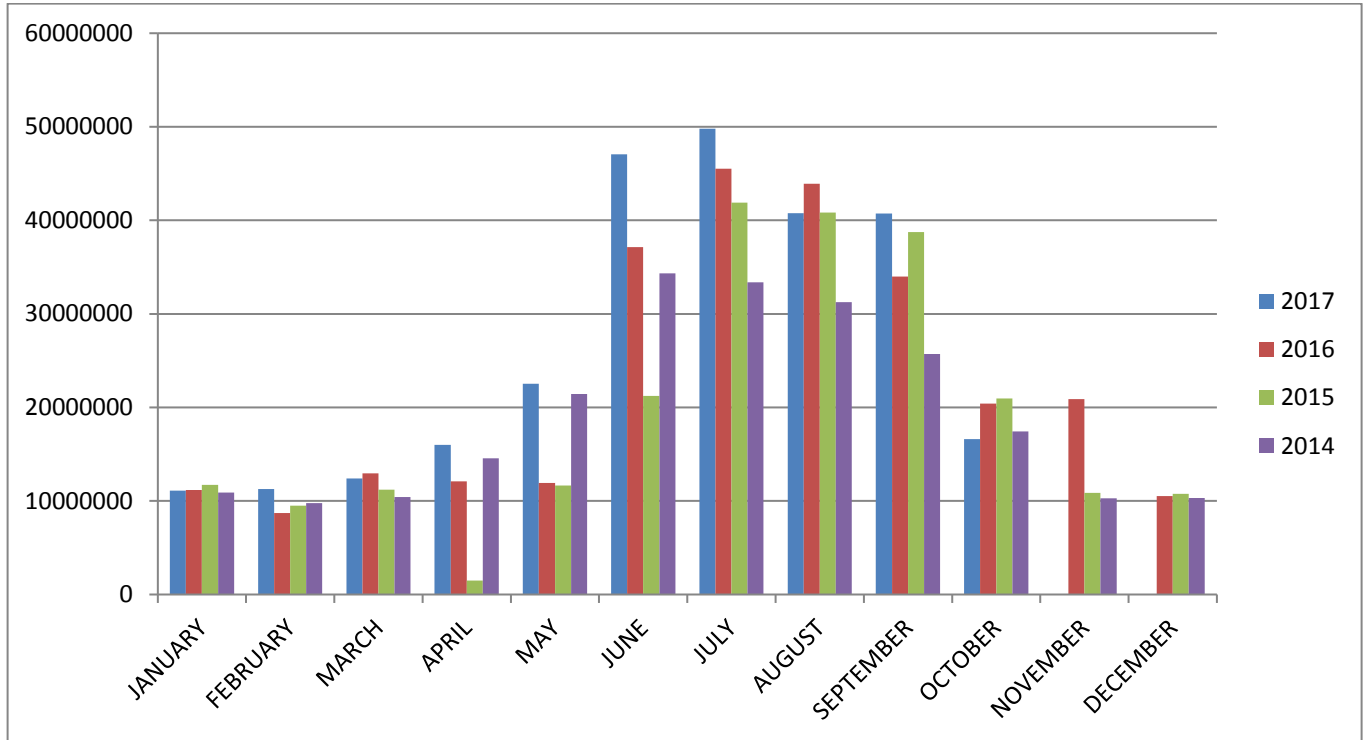
### **Streets and Cemetery October 2017 Highlights**

- ✚ Grading on CR 7
- ✚ Thermoplastic striping
- ✚ Pothole patching
- ✚ Street sweeping
- ✚ Blow out sprinklers at cemetery
- ✚ 1 funeral

### **Parks, Recreation, Pool, and Forestry October 2017 Highlights**

- ✚ Banner pole repair contracted
- ✚ Pool closure
- ✚ Banner hangings
- ✚ T-shirt design for Little League teams
- ✚ Removed flowers from pots on Mountain Ave
- ✚ Began inspecting Christmas lights
- ✚ Updated Forestry webpage
- ✚ Attended Tree Committee meeting, PORT committee meeting, CARA meetings
- ✚ Tree removal
- ✚ Consultations with public

## BERTHOUD WATER USAGE



### Personnel Summary

|                      | Full-time | Part-time | Seasonal |
|----------------------|-----------|-----------|----------|
| Administration       | 8         |           |          |
| Economic Development | 1         |           |          |
| Planning-Building    | 3         |           |          |
| Streets              | 4         | 1         |          |
| Recreation-Pool      | 4         |           | 2        |
| Parks-Forestry       | 4         |           |          |
| BATS                 | 1         | 2         |          |
| Water-Wastewater     | 4         | 1         |          |