

# BERTHOUD AT A GLANCE

Monthly Report  
SEPTEMBER 2017

- Sales & Use Tax revenue is 38% **over** budget for the month of September; \$224,099 was received and \$162,784 was budgeted.
- Town Revenue for the month of September including transfers between funds is \$1,610,916, a **decrease** of \$1,691,089 from August. This is due in part to funds received for water dedication.
- Town Expenditures for the month of September are \$2,383,405, an **increase** of \$1,488,848 from August. This is due in part to annual bond payments.
- Town Revenue is 84% **over** budget thru July.
- Town Expenditures are 26% **under** budget thru July.

## Sales Tax Review

SEPTEMBER	Berthoud Sales Tax	Motor Vehicle Use Tax	Building Materials Use Tax	Combined Total
<b>2017</b>	120,513.81	53,208.51	50,376.54	224,098.86
<b>2016</b>	115,689.23	55,128.91	274,930.59	445,748.73
<b>2015</b>	111,758.88	30,744.76	46,377.42	188,881.06
<b>2014</b>	101,868.15	37,922.09	44,795.05	184,585.29

**SALES TAX YEAR-TO-DATE FOR 2017**

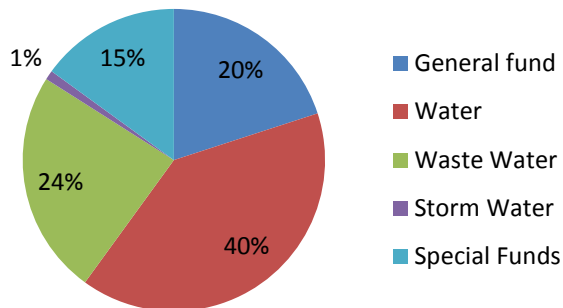
**\$2,805,238.98**

COMBINED STATEMENT OF REVENUES AND EXPENDITURES  
SEPTEMBER 2017

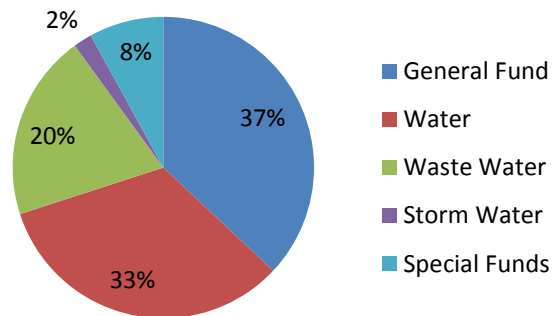
REVENUE	Current Month	YTD Actual	YTD Budget	% of Budget
General Fund	328,978	4,647,677	3,842,226	121%
Water	751,757	9,752,020	3,121,830	312%
Waste Water	287,557	5,623,218	3,448,908	163%
Storm Water	19,787	174,158	162,756	107%
Special Funds	222,837	3,634,833	2,361,204	154%
<b>TOTAL REVENUE</b>	<b>1,610,916</b>	<b>23,831,906</b>	<b>12,936,924</b>	<b>184%</b>
Prior Year Revenue	4,583,501	15,400,955	11,300,485	

EXPENDITURES	Current Month	YTD Actual	YTD Budget	% of Budget
General Fund	517,301	3,925,750	4,884,930	80%
Water	746,376	3,461,638	3,340,233	104%
Waste Water	865,933	2,159,981	3,171,177	68%
Storm Water	9,262	184,555	247,788	74%
Special Funds	244,533	873,443	2,651,274	33%
<b>TOTAL EXPENDITURES</b>	<b>2,383,405</b>	<b>10,605,367</b>	<b>14,295,402</b>	<b>74%</b>
Prior Year Expenses	1,279,246	13,108,809	14,470,482	

**Revenue**



**Expenditures**



	YEAR TO DATE TOTALS THRU SEPTEMBER 2017
Single Family Permits	333
Overall Permit Total	1078
Water Gallons Billed	251,636,000
Passports	1759
Cemetery	25 Funerals
Snow removal	138 hours

### Building Permit & Permit Valuation by Year & 2017 YTD

	2013	2014	2015	2016	2017 YTD
Single-Family home permits	152	66	113	133	333
All permits (roofing, decks, additions, etc.)	533	2197	638	732	1078
Total Permit Value	\$35,550,777	\$17,873,000	\$32,187,613	\$44,282,530	\$89,439,243

### Business Development September 2017 Highlights

- ✚ Responded to 4 inquiries (42 for the year)
- ✚ Hosted tour of community for Transwestern
- ✚ Met with Larimer County Economic Development executive to discuss county-wide retention
- ✚ Responded to Metro Denver EDC RFP for Amazon Headquarters search
- ✚ Met with manufacturing company interested in purchasing land for construction of facility
- ✚ Met with company interested in constructing facility at Wilson Ranch
- ✚ Attended 2 local or regional meetings

The seal of Waterbury Township is a large, circular emblem in the background. It features a central landscape with a yellow sun rising over purple mountains and green hills. The words "WATERBURY TOWNSHIP" are written in a circular path around the landscape, and "Est. 1888" is written at the bottom. The seal is semi-transparent and serves as a backdrop for the text.

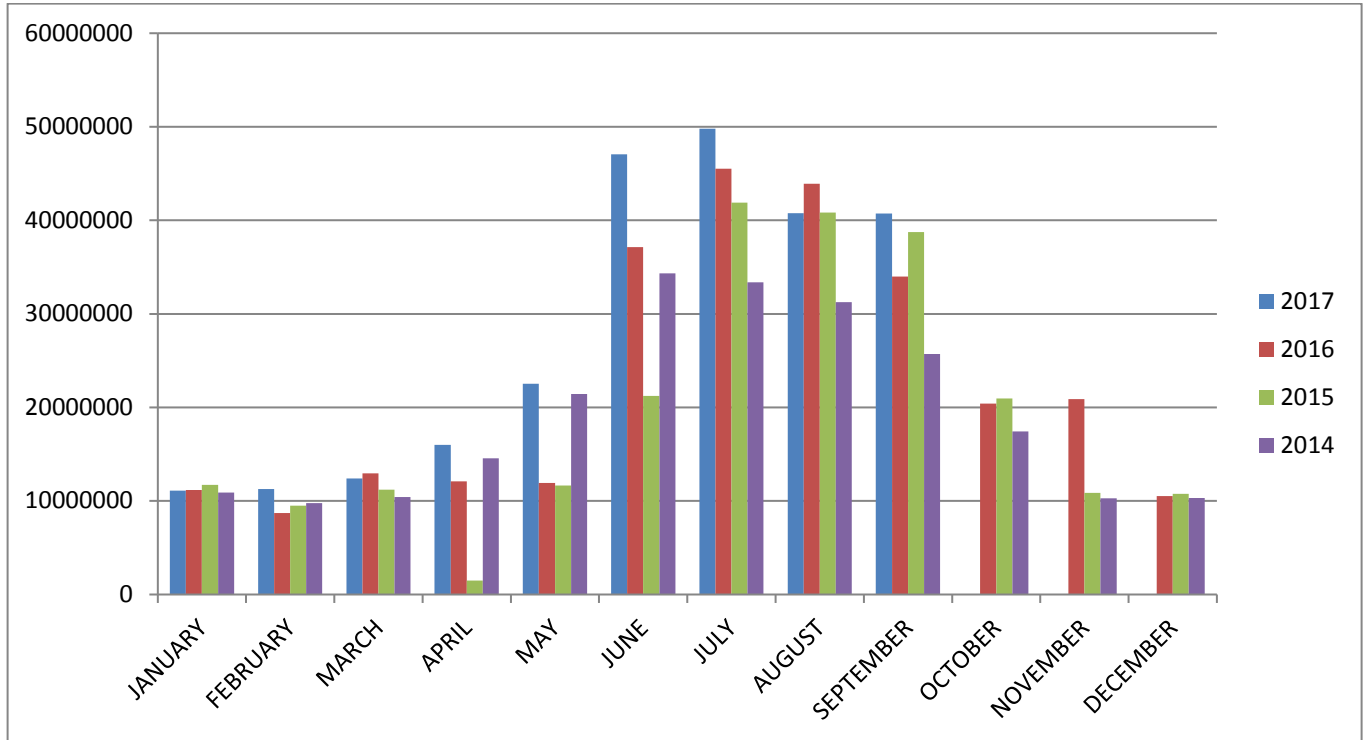
### Streets and Cemetery September 2017 Highlights

- ✦ Grading on CR 7, CR 10E, Clayton Place, Landfill
- ✦ Pothole patching
- ✦ Street sweeping
- ✦ 24 hours of sewer, water, and sidewalk inspections and proof rolls
- ✦ ADA training
- ✦ 1 funeral

### Parks, Recreation, Pool, and Forestry September 2017 Highlights

- ✦ Planned Halloween dodgeball tournament
- ✦ Planned Fall treasure hunt
- ✦ Inspected playgrounds
- ✦ Research on banner poles
- ✦ Pioneer Park bank seeded
- ✦ Banner hangings
- ✦ Assisted Chamber of Commerce with Softball Tournament
- ✦ Mowing, weed control, irrigation repairs
- ✦ Applied treatments to Pioneer Pond and Robert's Lake
- ✦ Attended Tree Committee meeting, PORT committee meeting, CARA meetings
- ✦ Tree removal
- ✦ Consultations with public

## BERTHOUD WATER USAGE



### Personnel Summary

	Full-time	Part-time	Seasonal
Administration	8		
Economic Development	1		
Planning-Building	4		
Streets	4	1	
Recreation-Pool	4		10
Parks-Forestry	4		
BATS	1	2	
Water-Wastewater	4	1	