

BERTHOUD AT A GLANCE

Monthly Report
JULY 2017

- Sales & Use Tax revenue is 75% **over** budget for the month of July; \$285,675 was received and \$162,784 was budgeted.
- Town Revenue for the month of July including transfers between funds is \$1,815,696, a **decrease** of \$945,594 from June. This is due in part to funds for Heron Lakes Lift Station project received in June.
- Town Expenditures for the month of July are \$827,812, a **decrease** of \$172,078 from June.
- Town Revenue is 88% **over** budget thru July.
- Town Expenditures are 33% **under** budget thru July.

Sales Tax Review

JULY	Berthoud Sales Tax	Motor Vehicle Use Tax	Building Materials Use Tax	Combined Total
2017	130,658.02	44,186.55	110,830.72	285,675.29
2016	111,531.40	42,772.15	31,545.10	185,848.65
2015	98,504.30	36,109.66	48,873.28	183,487.24
2014	96,088.05	29,187.60	13,120.34	138,395.99

SALES TAX YEAR-TO-DATE FOR 2017

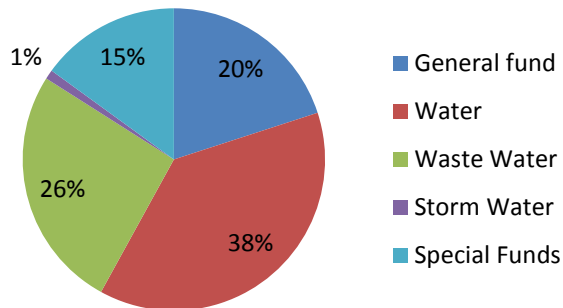
\$2,196,387.78

COMBINED STATEMENT OF REVENUES AND EXPENDITURES
JULY 2017

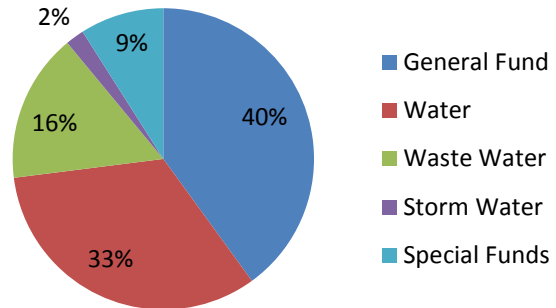
REVENUE	Current Month	YTD Actual	YTD Budget	% of Budget
General Fund	562,870	3,810,568	2,988,398	128%
Water	487,709	7,116,129	2,428,090	293%
Waste Water	385,367	4,937,034	2,682,484	184%
Storm Water	19,668	133,437	126,588	105%
Special Funds	360,082	2,921,817	1,836,492	159%
TOTAL REVENUE	1,815,696	18,918,985	10,062,052	188%
Prior Year Revenue	1,844,911	8,947,030	8,789,303	

EXPENDITURES	Current Month	YTD Actual	YTD Budget	% of Budget
General Fund	339,787	2,985,735	3,799,390	79%
Water	188,658	2,432,837	2,597,959	94%
Waste Water	190,988	1,180,106	2,466,471	48%
Storm Water	14,545	169,327	192,724	88%
Special Funds	93,834	635,037	2,062,102	31%
TOTAL EXPENDITURES	827,812	7,403,042	11,118,646	67%
Prior Year Expenses	1,188,073	11,160,407	11,254,831	

Revenue



Expenditures



	YEAR TO DATE TOTALS THRU JUNE 2017
Single Family Permits	309
Overall Permit Total	916
Water Gallons Billed	170,142,000
Passports	1478
Cemetery	18 Funerals
Snow removal	138 hours

Building Permit & Permit Valuation by Year & 2017 YTD

	2013	2014	2015	2016	2017 YTD
Single-Family home permits	152	66	113	133	309
All permits (roofing, decks, additions, etc.)	533	2197	638	732	916
Total Permit Value	\$35,550,777	\$17,873,000	\$32,187,613	\$44,282,530	\$70,383,171

Business Development July 2017 Highlights

- ✚ Met with Hall-Irwin to discuss interest in industrial building
- ✚ Completed 1 lease for Old Town Hall
- ✚ Met with companies interested in Wilson Ranch, Berthoud Tech Center, Berthoud Common
- ✚ Met with company interested in annexing into Berthoud
- ✚ Met with existing Berthoud companies interested in expansion
- ✚ Met with several businesses considering locating in Berthoud
- ✚ Attended 2 regional and state meetings
- ✚ Contacted multiple commercial brokers and national site locator about available properties

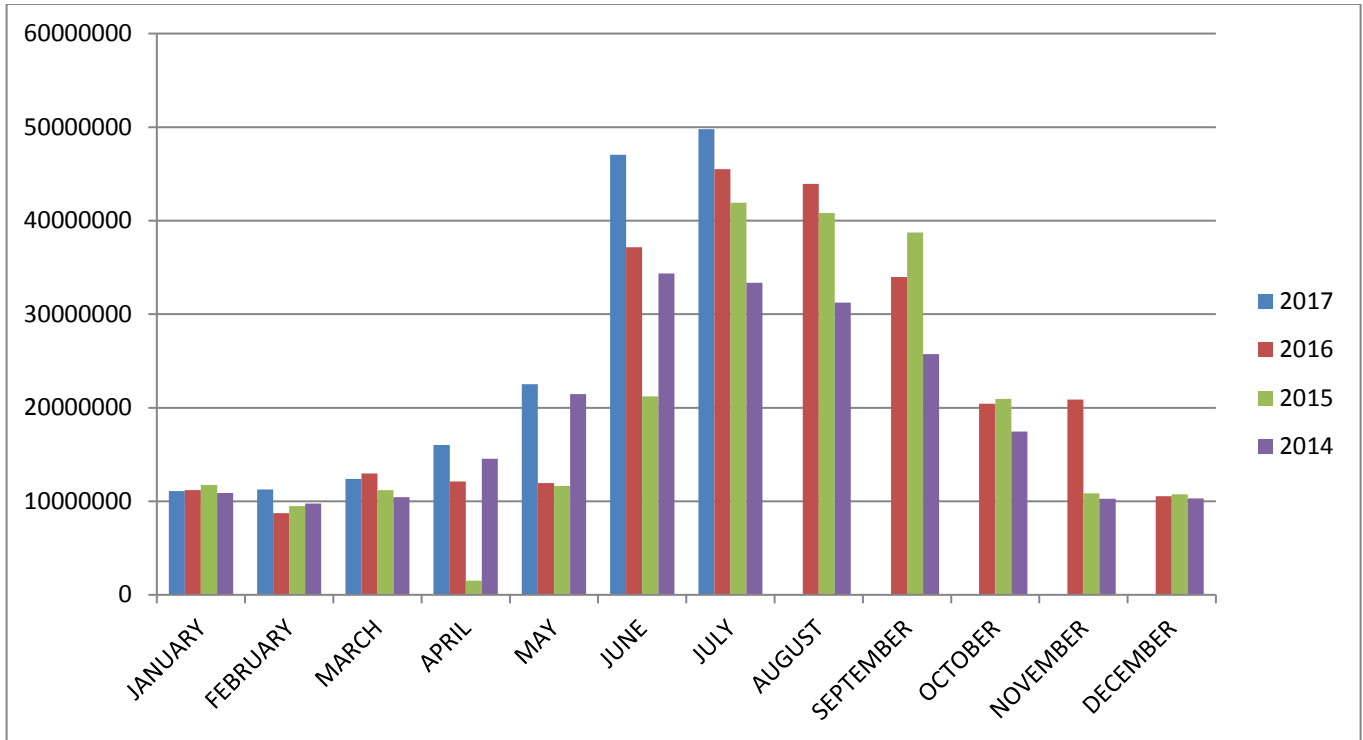
Streets and Cemetery July 2017 Highlights

- ✚ Grading on CR 7, CR 10E, Clayton Place, Recycle Center
- ✚ Island landscaping at LCR 17
- ✚ Weed spraying
- ✚ Pothole patching
- ✚ Street sweeping
- ✚ 12 hours of sidewalk inspections and proof rolls
- ✚ Assist with Berthoud Day cones
- ✚ 2 funerals

Parks, Recreation, Pool, and Forestry July 2017 Highlights

- ✚ Hosted British Soccer Camp and Summer Sports Camp
- ✚ Hosted baseball tournament and District tennis tournament
- ✚ Registrations, scheduling, equipment maintenance
- ✚ Swim lesson management
- ✚ Pool chemical maintenance and overall pool maintenance
- ✚ Banner hanging
- ✚ Irrigation repairs
- ✚ Started Martial Arts classes
- ✚ Wireless scoreboards installed at Bein fields
- ✚ Mowing, weed control, irrigation repairs
- ✚ Applied treatments to Pioneer Pond and Robert's Lake
- ✚ Treated ash trees for EAB
- ✚ Updated tree inventory and database records
- ✚ Equipment maintenance
- ✚ Attended Tree Committee meeting, PORT committee meeting, CARA meetings
- ✚ Tree removal
- ✚ Consultations with public

BERTHOUD WATER USAGE



Personnel Summary

	Full-time	Part-time	Seasonal
Administration	7		
Economic Development	1		
Planning-Building	4		
Streets	4	1	2
Recreation-Pool	4		30
Parks-Forestry	4		
BATS	1	2	
Water-Wastewater	4	1	