

BERTHOUD AT A GLANCE

Monthly Report
JUNE 2017

- Sales & Use Tax revenue is 39% **over** budget for the month of June; \$225,716 was received and \$162,784 was budgeted.
- Town Revenue for the month of June including transfers between funds is \$2,761,290, an **increase** of \$1,366,815 from May. This is due in part to funds received for Heron Lakes Lift Station project.
- Town Expenditures for the month of June are \$999,890, a **decrease** of \$278,787 from May.
- Town Revenue is 98% **over** budget thru June.
- Town Expenditures are 31% **under** budget thru June.

Sales Tax Review

JUNE	Berthoud Sales Tax	Motor Vehicle Use Tax	Building Materials Use Tax	Combined Total
2017	114,104.45	37,614.49	73,997.10	225,716.04
2016	98,928.94	37,729.11	9,420.22	146,075.27
2015	106,022.80	29,512.56	21,753.97	157,289.33
2014	91,280.71	21,404.51	23,372.83	136,058.05

SALES TAX YEAR-TO-DATE FOR 2017

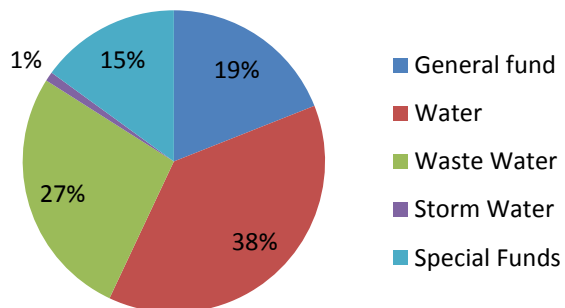
\$1,910,712.49

COMBINED STATEMENT OF REVENUES AND EXPENDITURES
JUNE 2017

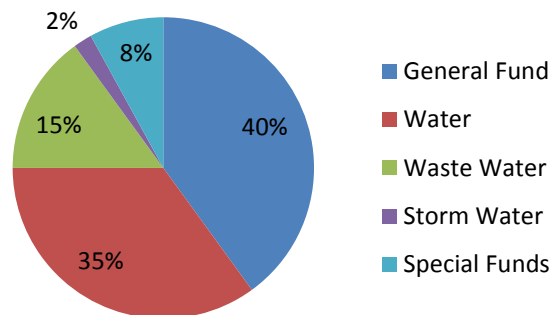
REVENUE	Current Month	YTD Actual	YTD Budget	% of Budget
General Fund	448,813	3,247,698	2,561,484	127%
Water	785,935	6,628,420	2,081,220	318%
Waste Water	1,254,238	4,551,667	2,299,272	198%
Storm Water	19,745	113,769	108,504	105%
Special Funds	252,559	2,561,735	1,574,136	163%
TOTAL REVENUE	2,761,290	17,103,289	8,624,616	198%
Prior Year Revenue	883,823	8,509,130	7,533,650	

EXPENDITURES	Current Month	YTD Actual	YTD Budget	% of Budget
General Fund	469,657	2,645,948	3,256,620	81%
Water	246,736	2,244,179	2,226,822	101%
Waste Water	179,936	989,118	2,114,118	47%
Storm Water	43,079	154,782	165,192	94%
Special Funds	60,482	541,203	1,767,516	31%
TOTAL EXPENDITURES	999,890	6,575,230	9,530,268	69%
Prior Year Expenses	1,472,710	9,972,334	9,646,986	

Revenue



Expenditures



2017

	YEAR TO DATE TOTALS THRU JUNE 2017
Single Family Permits	288
Overall Permit Total	841
Water Gallons Billed	120,362,000
Passports	1318
Cemetery	16 Funerals
Snow removal	138 hours

Building Permit & Permit Valuation by Year & 2017 YTD

	2013	2014	2015	2016	2017 YTD
Single-Family home permits	152	66	113	133	288
All permits (roofing, decks, additions, etc.)	533	2197	638	732	841
Total Permit Value	\$35,550,777	\$17,873,000	\$32,187,613	\$44,282,530	\$65,113,048

Business Development June 2017 Highlights

- ✚ Responded to 2 inquiries for site information (38 YTD)
- ✚ Met with companies interested in Old Town Hall
- ✚ Met with companies interested in Old Home State Bank location
- ✚ Met with companies interested in purchasing at 287 & 56
- ✚ Met with representatives from M3 Construction, Hall-Irwin, NCEA
- ✚ Met with several businesses considering locating in Berthoud
- ✚ Attended Old Town Hall committee meeting
- ✚ Attended 4 regional and state meetings
- ✚ Contacted multiple commercial brokers and national site locator about available properties

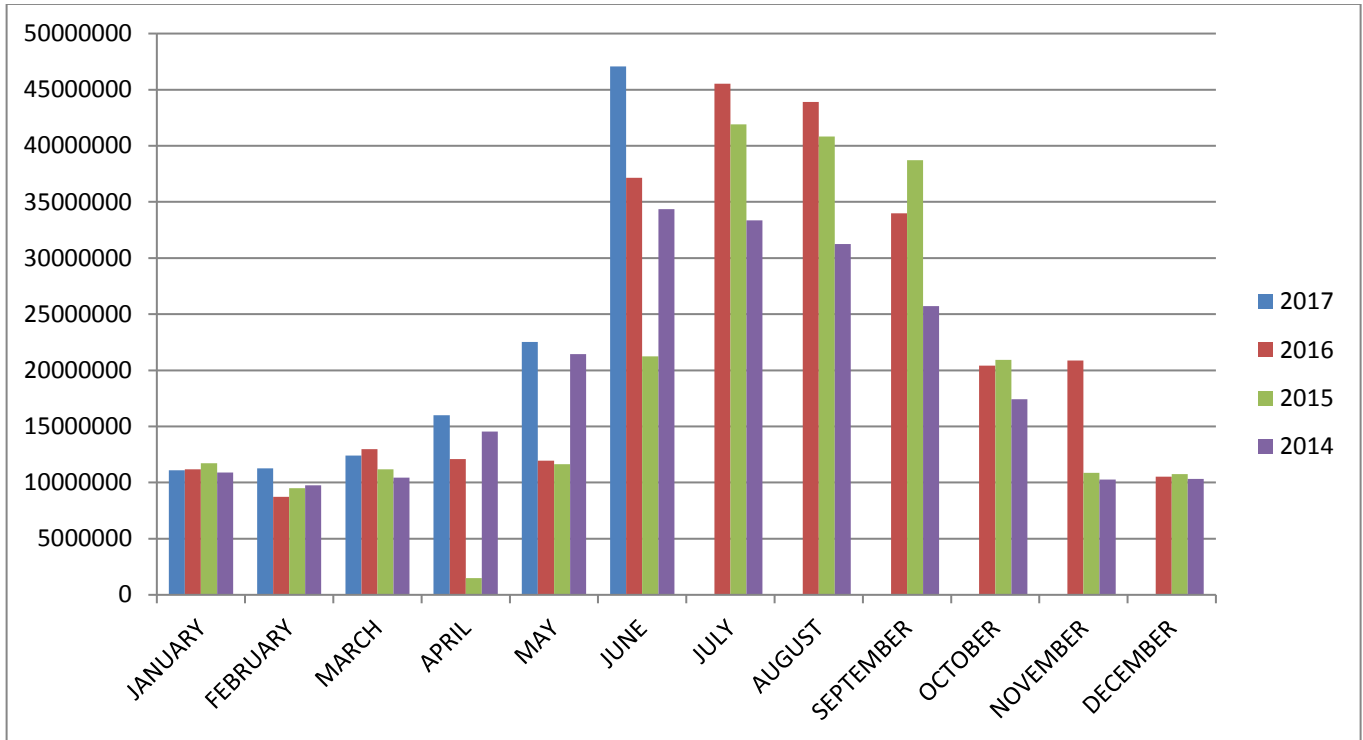
Streets and Cemetery June 2017 Highlights

- ✚ Grading on CR 7 and CR 10E
- ✚ Island removal at 10E and Island landscaping at LCR 17
- ✚ Weed spraying
- ✚ Pothole patching
- ✚ Street sweeping
- ✚ 5 sidewalk inspections and 4 proof rolls
- ✚ Assist with Berthoud Day cones
- ✚ 1 funeral

Parks, Recreation, Pool, and Forestry June 2017 Highlights

- ✚ Hosted CARA tennis matches, youth volleyball camp, Rockies Baseball Skills Challenge
- ✚ Formed weekly sport camp- daily lesson plan and overall outline
- ✚ Registrations, scheduling, equipment maintenance
- ✚ Swim lesson management
- ✚ Pool chemical maintenance and overall pool maintenance
- ✚ Banner hanging
- ✚ Irrigation repairs
- ✚ Applied treatments for Roberts Pond, Pioneer Pond
- ✚ Backflow inspections
- ✚ Assisted with Skate Park improvements
- ✚ Attended Plant Health Care seminar
- ✚ Treated ash trees for EAB
- ✚ Updated tree inventory and database records
- ✚ Equipment maintenance
- ✚ Attended Tree Committee meeting, PORT committee meeting
- ✚ Tree removal
- ✚ Consultations with public

BERTHOUD WATER USAGE



Personnel Summary

	Full-time	Part-time	Seasonal
Administration	7		
Economic Development	1		
Planning-Building	4		
Streets	4	1	1
Recreation-Pool	4		29
Parks-Forestry	4		
BATS	1	2	
Water-Wastewater	5	1	