



ORDINANCE NO. 996

AN ORDINANCE RENAMING STREETS WITHIN GATEWAY PARK OF THE TOWN OF BERTHOUD, LARIMER AND WELD COUNTIES, STATE OF COLORADO.

Section 1. Determination of Necessity for Name Change

WHEREAS, it has been determined by the Board of Trustees of the Town of Berthoud that the following described streets do not conform to the street naming standards of the Town of Berthoud and the Larimer County Emergency Authority:

Section 2. Renaming of Streets

NOW, THEREFORE, BE IT ORDAINED BY THE BOARD OF TRUSTEES OF THE TOWN OF BERTHOUD, LARIMER AND WELD COUNTIES, COLORADO, THAT THE FOLLOWING DESCRIBED STREETS ARE HEREBY RENAMED AS FOLLOWS:

From	12 th Street	to	13 th Street
From	Gateway Park Lane (N/S portion)	to	14 th Street
From	Gateway Park Lane (E/W portion)	to	Gateway Park Drive
From	Private Drive	to	Gateway Park Lane
From	Bristlecone Drive	to	16 th Street

SEE ATTACHED "EXHIBIT A"

Section 3. Effective Date

The Board of Trustees of the Town of Berthoud herewith finds, determines and designates that this Ordinance shall take effect and be in force thirty (30) days after publication.

At its meeting September 28, 2004, a public hearing was set by the Board of Trustees of the Town of Berthoud for its meeting held on the 12th day of October, 2004. After the public hearing, this Ordinance was read, passed and ordered published by the Board of Trustees at its meeting this 12th day of October, 2004.

ATTEST:

TOWN OF BERTHOUD:

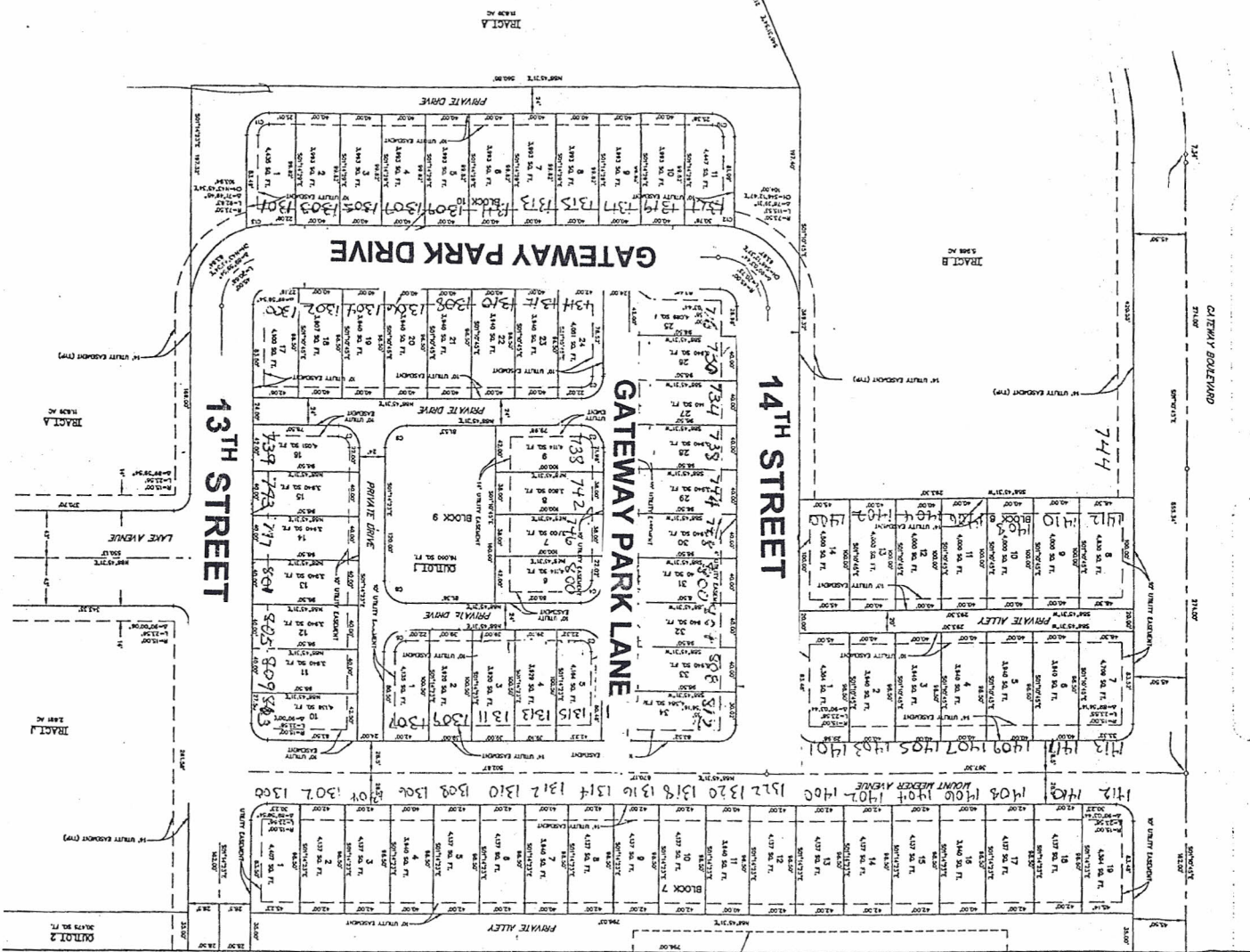

Mary K. Cowdin - Town Clerk


Milan Karspeck - Mayor

Published: 10-21-04

✓ Town of Berthoud
P.O. Box 1229
Berthoud, CO 80513

"EXHIBIT A"



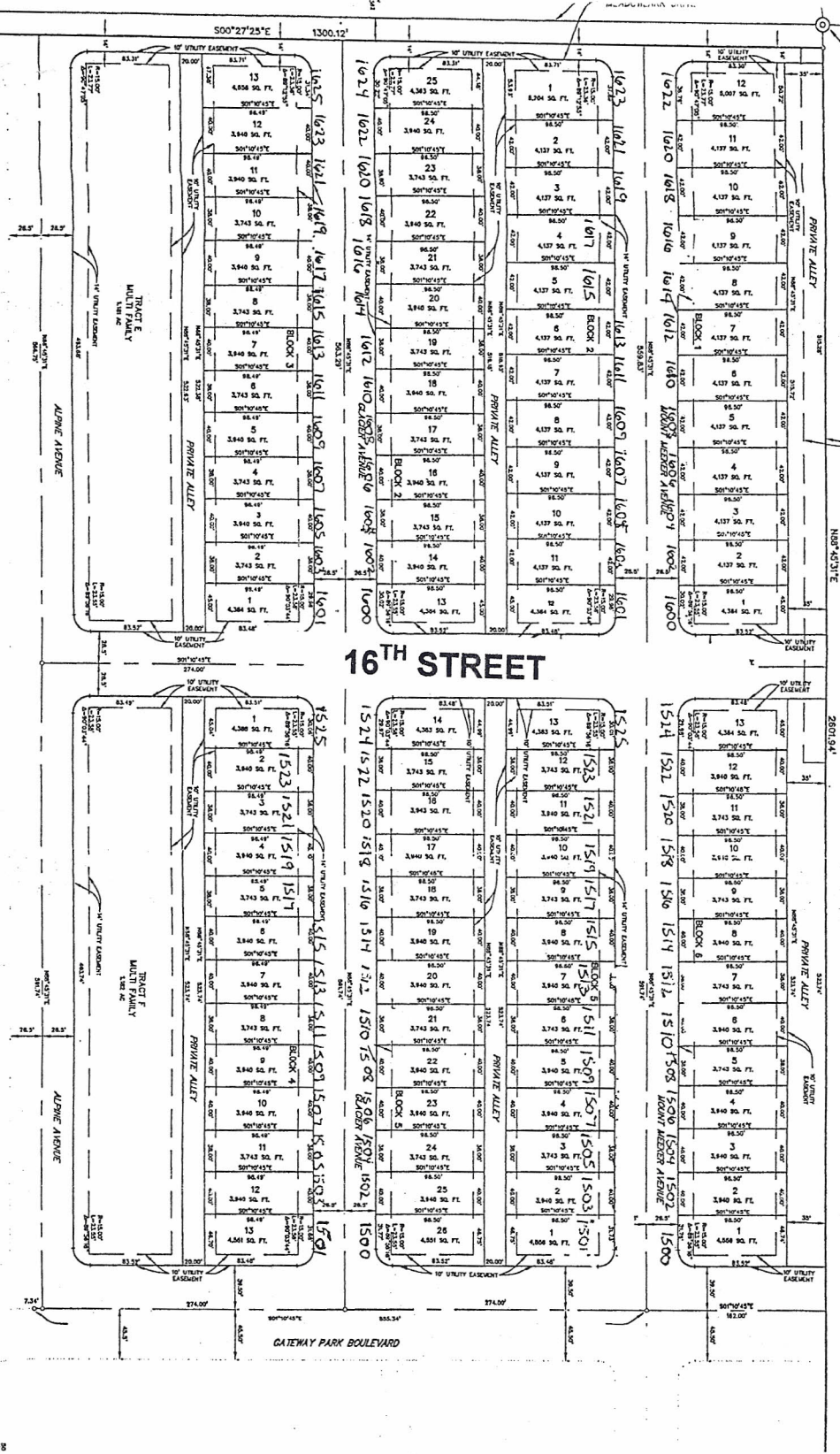
CURVE	RADIUS	LENGTH	DELTA
C1	10.00'	10.00'	90.00°
C2	10.00'	10.00'	90.00°
C3	10.00'	10.00'	90.00°
C4	10.00'	10.00'	90.00°
C5	10.00'	10.00'	90.00°
C6	10.00'	10.00'	90.00°
C7	10.00'	10.00'	90.00°
C8	10.00'	10.00'	90.00°
C9	10.00'	10.00'	90.00°
C10	10.00'	10.00'	90.00°
C11	10.00'	10.00'	90.00°
C12	10.00'	10.00'	90.00°
C13	10.00'	10.00'	90.00°
C14	10.00'	10.00'	90.00°
C15	10.00'	10.00'	90.00°
C16	10.00'	10.00'	90.00°
C17	10.00'	10.00'	90.00°
C18	10.00'	10.00'	90.00°
C19	10.00'	10.00'	90.00°
C20	10.00'	10.00'	90.00°
C21	10.00'	10.00'	90.00°
C22	10.00'	10.00'	90.00°
C23	10.00'	10.00'	90.00°
C24	10.00'	10.00'	90.00°
C25	10.00'	10.00'	90.00°
C26	10.00'	10.00'	90.00°
C27	10.00'	10.00'	90.00°
C28	10.00'	10.00'	90.00°
C29	10.00'	10.00'	90.00°
C30	10.00'	10.00'	90.00°
C31	10.00'	10.00'	90.00°
C32	10.00'	10.00'	90.00°
C33	10.00'	10.00'	90.00°
C34	10.00'	10.00'	90.00°
C35	10.00'	10.00'	90.00°
C36	10.00'	10.00'	90.00°
C37	10.00'	10.00'	90.00°
C38	10.00'	10.00'	90.00°
C39	10.00'	10.00'	90.00°
C40	10.00'	10.00'	90.00°
C41	10.00'	10.00'	90.00°
C42	10.00'	10.00'	90.00°
C43	10.00'	10.00'	90.00°
C44	10.00'	10.00'	90.00°
C45	10.00'	10.00'	90.00°
C46	10.00'	10.00'	90.00°
C47	10.00'	10.00'	90.00°
C48	10.00'	10.00'	90.00°
C49	10.00'	10.00'	90.00°
C50	10.00'	10.00'	90.00°
C51	10.00'	10.00'	90.00°
C52	10.00'	10.00'	90.00°
C53	10.00'	10.00'	90.00°
C54	10.00'	10.00'	90.00°
C55	10.00'	10.00'	90.00°
C56	10.00'	10.00'	90.00°
C57	10.00'	10.00'	90.00°
C58	10.00'	10.00'	90.00°
C59	10.00'	10.00'	90.00°
C60	10.00'	10.00'	90.00°
C61	10.00'	10.00'	90.00°
C62	10.00'	10.00'	90.00°
C63	10.00'	10.00'	90.00°
C64	10.00'	10.00'	90.00°
C65	10.00'	10.00'	90.00°
C66	10.00'	10.00'	90.00°
C67	10.00'	10.00'	90.00°
C68	10.00'	10.00'	90.00°
C69	10.00'	10.00'	90.00°
C70	10.00'	10.00'	90.00°
C71	10.00'	10.00'	90.00°
C72	10.00'	10.00'	90.00°
C73	10.00'	10.00'	90.00°
C74	10.00'	10.00'	90.00°
C75	10.00'	10.00'	90.00°
C76	10.00'	10.00'	90.00°
C77	10.00'	10.00'	90.00°
C78	10.00'	10.00'	90.00°
C79	10.00'	10.00'	90.00°
C80	10.00'	10.00'	90.00°
C81	10.00'	10.00'	90.00°
C82	10.00'	10.00'	90.00°
C83	10.00'	10.00'	90.00°
C84	10.00'	10.00'	90.00°
C85	10.00'	10.00'	90.00°
C86	10.00'	10.00'	90.00°
C87	10.00'	10.00'	90.00°
C88	10.00'	10.00'	90.00°
C89	10.00'	10.00'	90.00°
C90	10.00'	10.00'	90.00°
C91	10.00'	10.00'	90.00°
C92	10.00'	10.00'	90.00°
C93	10.00'	10.00'	90.00°
C94	10.00'	10.00'	90.00°
C95	10.00'	10.00'	90.00°
C96	10.00'	10.00'	90.00°
C97	10.00'	10.00'	90.00°
C98	10.00'	10.00'	90.00°
C99	10.00'	10.00'	90.00°
C100	10.00'	10.00'	90.00°

SCALE: 1" = 50'



GATEWAY PARK "EXHIBIT A"

CS/16 SEC. 15
SET AS SHOWN WITH 2'-1/2"
T.O.B. & C.O. P.S. 52835



16TH STREET

GATEWAY PARK BOULEVARD

